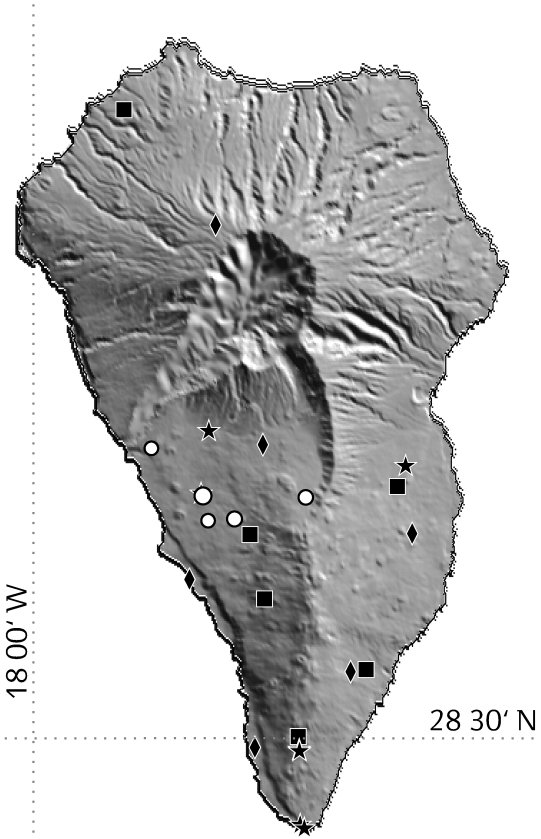
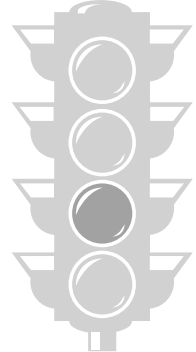




N. earthquakes: 5
Energy: 0.005 GJ
Max. magnitude: 2.1



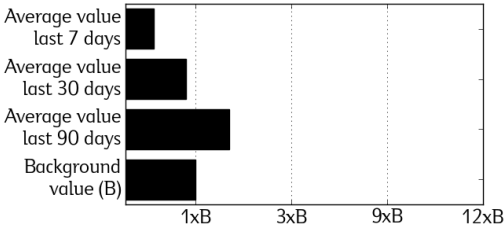
Volcanic
Semaphore
PEVOLCA



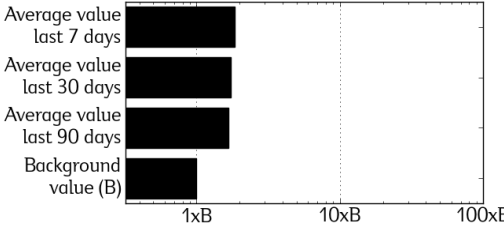
YELLOW

Special plan of civil protection and
emergency response for volcanic risk in
the Canary Islands
(PEVOLCA)

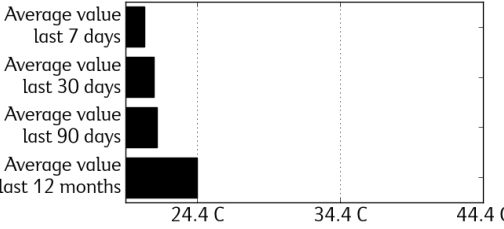
Carbon Dioxide (CO₂) Efflux - LPG04



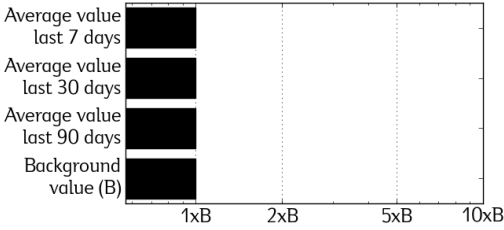
Seismic Energy Released



Temperature Variations - LPG04



Vertical Displacement - MAZO



Seismicity	Permanent Networks
(Magnitude Richter Scale)	
○ < 1.0	■ Seismic Station
1.0 ○ < 2.0	◆ GPS Station
2.0 ○ < 3.0	★ Geochemical Station
3.0 ○ < 4.0	Thermometric Station
4.0 ○	

OBSERVATIONS: The meaning of the semaphore positions are: GREEN = Carry out your activities normally; YELLOW = Be aware of the communications of civil protection authorities; ORANGE = Follow the instruction of the authorities; RED = Total evacuation of affected population. Following the indications of PEVOLCA, we inform that the semaphore is currently in YELLOW position. This report is updated at 00:00 of 26 July 2024. The diffuse carbon dioxide flux, the released seismic energy and the vertical component of the ground displacement are shown in this graphical report as a multiple of the background values (B). The soil temperature is shown as variation with respect to the average value of the last 12 months.